

Overview

The EN2400 offers 24 10 / 100Mbps Fast Ethernet ports with 2 Gigabit TP / SFP combo ports (Port-25, 26). These two Gigabit TP / SFP combo ports can be either 1000Base-T for 10 / 100 / 1000Mbps or 1000Base-SX / LX through SFP (Small Factor Pluggable) interface. The EN2400 boasts a high performance switch's architecture that is capable of providing non-blocking switch fabric and wire-speed throughput as high as 8.8Gbps. Its two built-in GbE uplink ports also offer incredible extensibility, flexibility and connectivity to the Core switches or Servers.

The EN2400 provides advanced WEB and SNMP management interface for network growth and expand. With its built-in web-based management, the FGSW-2620VM offers an easy-to-use, platform-independent management and configuration facility. The EN2400 supports standard Simple Network Management Protocol (SNMP) and can be monitored via any standard-based management software. For efficient management via WEB interface, the En2400 can be programmed for management functions of basic switch, such as port speed configuration, Port Trunking, VLAN, Port Mirroring, Rapid Spanning Tree and Misc Configuration. Additionally, the firmware includes advanced features, such as IGMP snooping, QoS (Quality of Service), broadcast storm and bandwidth control, to enhance bandwidth utilization.

The En2400 also offers comprehensive Access Control List (ACL) for enforcing security to the edge. Its protection mechanisms comprises of port-based 802.1X user and device authentication. Moreover, the switch provides MAC filter, Static MAC and IP Security as well. The administrators can now construct highly secured corporate networks with considerably less time and effort than before.



Features

- *24-Port 10/100Mbps Fast Ethernet Switch*
- *2-Port Gigabit TP/SFP combo ports*
- *802.3z and IEEE 802.3ab Gigabit Ethernet standard*
- *Supports auto-negotiation-10/20, 100/200Mbps*
- *Auto-MDI / MDI-X detection on each RJ-45 port*
- *Prevents packet loss with back pressure (Half-Duplex) and 802.3x PAUSE frame Flow Control (Full-Duplex)*
- *Store and Forward architecture, broadcast storm control, runt / CRC filtering eliminates erroneous packets to optimize the network bandwidth*
- *8K MAC address table, automatic source address learning and ageing*
- *Port-Based VLAN and IEEE 802.1Q Tagged VLAN*
- *IEEE 802.3ad Port trunk LACP and Static Port Trunk*
- *Spanning tree protocol IEEE 802.1w*
- *IGMP snooping and IGMP Query mode for Multi-media application*
- *Broadcast storm filter*
- *Port mirroring allows to monitor the traffic across any port in real time*

Applications

- *ITS Over Ethernet*
- *IP Video Over Ethernet*
- *SCADA Over Ethernet*
- *Campus Networks*
- *Traffic Networks*
- *Homeland Security*
- *Corporate and Enterprise Networks*

Ordering Information

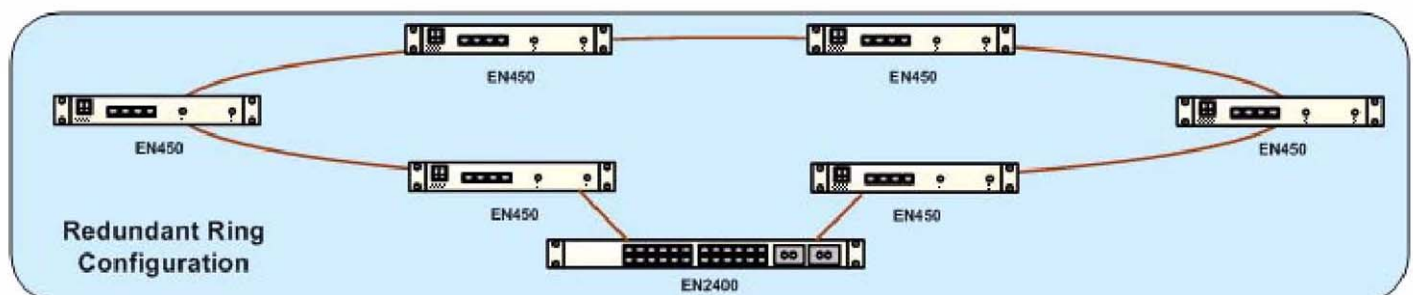
Model	Descriptions
EN2400	24 10/100 Base TX + 2 1000 Base TX + 2 SFP Slots Ethernet Managed Switch
<small>*** Please Consult Factory for Additional Model Numbers***</small>	

Specifications

System:	
Network Standard	IEEE 802.3 10Base-T Ethernet IEEE 802.3u 100Base-TX Fast Ethernet IEEE 802.3ab 1000Base-T Gb Ethernet IEEE 802.3z 1000Base-SX/LX Gb Ethernet IEEE 802.3x Full-duplex Flow Control IEEE 802.1p Class of Service IEEE 802.1X Port-Based Authentication IEEE 802.1Q Tag-Based VLAN IEEE 802.1w Rapid Spanning Tree
Ports	24 10/100Base-TX RJ-45 Auto-MDI / MDI-X ports
Module Slots	2 GB TP/SFP Combo Ports
Switch Processing	Store-and-forward
Throughput	6.547 Mbps (packet per second)
Switch Fabric	8.8 Gbps
Address Table	8K entries
Share Data Buffer	512K Bytes
Flow Control	Back pressure for Half-Duplex, IEEE 802.3x Pause Frame for Full-Duplex
Network Management:	
Interface	Web, SNMP v1
SNMP MIB Supports	RFC-1213 MIB II
Physical:	
Dimensions	17.5" x 6.5" x 1.75"
Weight	4.0 lbs
Power:	
Standalone	90~240 VAC / 48 VDC

Ethernet Layer 2:	
Port Status	Display per port's disable / enable status. Link status, Flow control status and speed duplex mode per port.
Port Configuration	Per port disable / enable, Auto-negotiation disable / enable. Flow control disable / enable and bandwidth control on each port
Trunk Configuration	Supports 13 groups of 8-Port trunk
VLAN Configuration	IEEE 802.1Q Tag-Based VLAN and Port-based VLAN. Supports maximum up to 26 VLAN groups
Spanning Tree Protocol	IEEE 802.1w Rapid Spanning Tree
Port Monitoring	One Mirroring port to monitor one mirrored port. The monitor modes are RX, TX and RX and TX
IGMP Snooping	Supports v1 and v2 protocol Supports IGMP Querier
QoS Configuration	IEEE 802.1p QoS on each port; 4 priority queues per port
Port Counters	Display detail traffic counters on each port
Rate Limit	Inbound Rate Limit and Outbound Traffic shaping; allow per 1Mbits setting
Access Control List	Supports up to 16 Access Control list groups
Environment:	
Operating	-34° C to +74° C
Storage	-40° C to + 95° C
Humidity	98% Non-Condensing

Applications



Typical EN2400 Application