

### Overview

The VILINK MC100 Media Converter series is designed to operate as a 10/100Mbps Fiber Optic Ethernet converter with web-based management capability. The converter mediates between a 10/100M Base-TX segment and a 100Base-FX segment. It is primarily designed for large, higher speed/bandwidth demanding workgroups that require expansion of the Ethernet network. It can extend the conventional 10M Ethernet or 100M Fast Ethernet to 20Km~100Km via the fast Ethernet Fiber-optical Line. It is high-performance, cost effective and flexible solutions for a wide range of applications in the field of LAN campus network.

The Web-based management feature is designed for Fiber To The Home (FTTH) applications. It allows the users to view all 10/100M connections from the central location via web-management chassis. The MC100 Media Converter is available as standalone version (MC100) with external supply and rack module version (MC100R) of 16 slots MC1600 chassis. Specific optics are available for SC or ST, multimode or Single mode, and 1 or 2 fibers connectors.

### Applications

- *Fiber To The Home (FTTH)*
- *ITS Traffic Network*
- *Homeland Security*
- *Metro Transportation Network*
- *Campus Network*
- *Utility SCADA Network*



### Features

- *Fully Compliant with IEEE802.3 10Base-T, IEEE802.3u 100Base-TX/FX standard*
- *Auto-detection of half/full duplex transfer mode for TX port*
- *Web-Based Management*
- *Auto-negotiation of 10/100 Mbps rate and Auto-MDI/MDIX for TX port*
- *Provide switch configuration of half/full duplex transfer mode for FX port*
- *Provide one fiber connector and one UTP connector*
- *Extend fiber distance up to 10Km for multi-mode fiber and 20~100Km for single mode fiber*
- *Easy-to-view LED indicators provides status to easily monitor network activity*

### Ordering Information

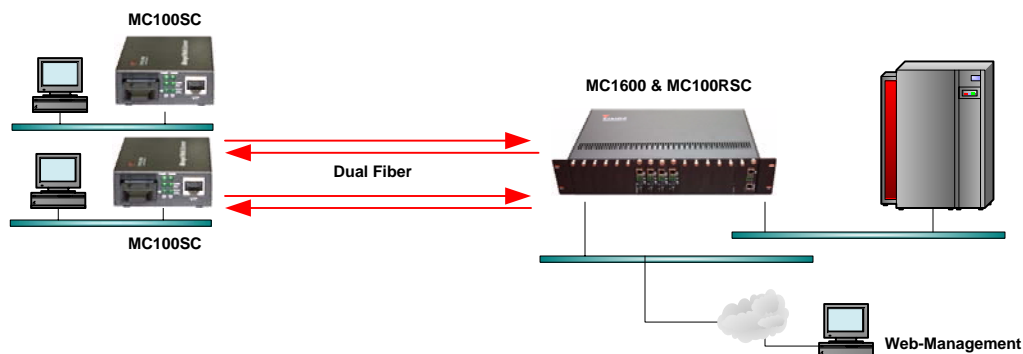
Model	Descriptions
MC100SC	10/100Base-TX-100Base-FX, 1310 SM SC, 20 Km, Web-Management MC
MC100RSC	10/100Base-TX-100Base-FX, 1310 SM SC, 20 Km, Rack Card, Web-Management MC
MC1600	Web Management Media Converter, 2RU 16 Slots Chassis, Dual 90~240 VAC
<small>*** Please Consult Factory for Additional Model Numbers***</small>	

### Specifications

<b>System:</b>	
Error Rate	1 in 10 <sup>12</sup> or Better
Network Standard	IEEE802.3 10BaseT IEEE802.3u 100Base TX/FX IEEE802.3 ab 1000Base TX IEEE802.3 3z FX
Indicators	TX, FX, PDL, TDL, PO, 10/100
Support	VLAN, Trunking, 1K Buffer
<b>Network Management:</b>	
MC1600 Chassis	Web Management
Support	MTU, MPLS, PPPOE
<b>Physical:</b>	
Dimensions	6.5" x 5.5" x 1.5"
Rack Card	4.5" x 3.5" x 1"
Weight	1.5 lb.
<b>Power:</b>	
Standalone	09-240 VAC Adapter @ 0.125 Amp / 5 VDC @ 2 Amp
Rack Card	90-240 VAC @ 0.25 Amp

<b>Fiber Interface:</b>	
Wavelength	1310/1550 nm
Data Rate	10/100 Mbps
Connector	SC/ST
Fiber	One or Two Fibers
Distances	10KM @ MM 40KM, 60KM, 100KM @ SM
<b>TX Interface:</b>	
Data Rate	10/100 Mbps
TX Port	Auto-MDI/MDIX
Transmission Mode	Half/Full Duplex
Connector	RJ45
<b>Environment:</b>	
Operating	-34 <sup>0</sup> C to +74 <sup>0</sup> C
Storage	-40 <sup>0</sup> C to + 95 <sup>0</sup> C
Humidity	98% Non-Condensing

### Applications



Typical MC100 and MC100R Application

